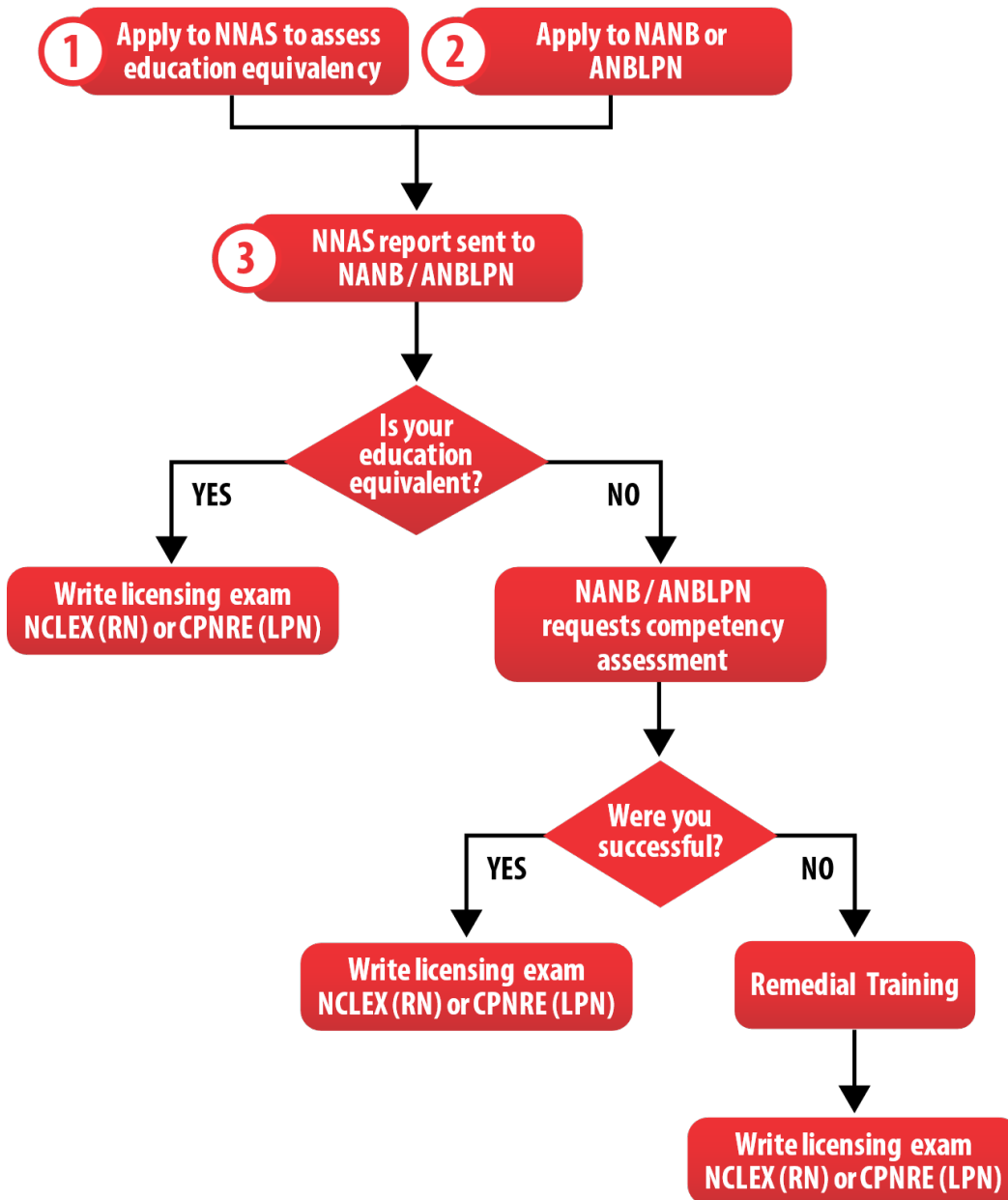


INTERNATIONALLY EDUCATED NURSES

I **do not have** a Canadian nursing license and I have a study or work permit

Licensing Phase



Note: If a competency assessment is required, you must be in New Brunswick for the assessment.

Immigration Phase

Step 1: Find a job and accept a job offer. Explore available job opportunities in New Brunswick nursing homes [here](#)!

Step 2: To start the immigration process, apply to one of the immigration programs through the province of New Brunswick [here](#).

Step 3: After receiving approval through the province of New Brunswick, apply to the federal government [here](#) to receive your permanent residency status.

Note: You can start the immigration process at any point while obtaining your license.

Note: There are many opportunities to work as a casual, part-time or full-time Resident Attendant in New Brunswick nursing homes while you complete the licensing process. Learn more about the role of the Resident Attendant [here](#) and check available positions on the career opportunities section of this site.